

Eagle Eyes

Can you find your prey like an eagle?

What you need:

- Just you, some friends and/or stuffed toys
- An outdoor or indoor area with lots of places to hide

Important

Decide on game boundaries before starting so people do not go too far.

Decide on a call to use to bring everybody back to the eagle's nest.

In this game one player is a hungry sharp-eyed eagle searching for its prey and the other players are animals hiding from the eagle.

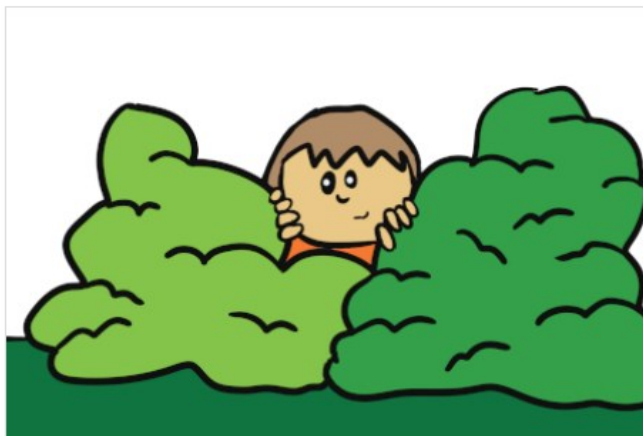
How to play with lots of friends



How to play (with lots of friends)

1. Choose a place in the centre of the playing area to be the eagle's nest.
2. The player chosen to be the eagle closes their eyes and counts to 60. While the eagle is counting the other players find a hiding spot where they can keep an eye on the eagle.
3. Players must keep an eye on the eagle throughout the game.
4. When the eagle wakes up, they must find all the other players without moving from their nest. To do this they point or call out to the players they find. Players who have been found are out of the round. The game continues until everyone has been found.

The last player found is the eagle in the next game.



Two player alternative game

- This version of the game is played the same as above except that the player who is not the eagle hides several stuffed toys in the playing area. The face of the stuffed toys must be able to see the eagle.
- The eagle stays in their nest and their goal is to locate all the stuffed animals that the other player has hidden by pointing at or describing them.
- ???Once all the stuffed toys have been found the players swap their roles and the game starts again.



Did you know?

An eagle's vision is at least four times better than a humans?

